

LEGEND			
	CATCH BASIN		DRAIN
	DRAIN MANHOLE		ELECTRIC
	ELECTRIC MANHOLE		FIRE SERVICE
	SIGN		SEWER
	SEWER MANHOLE		TELEPHONE
	TELEPHONE MANHOLE		WATER
	UNKNOWN MANHOLE		CHAIN LINK FENCE
	GAS GATE		
	WATER GATE		
	AREA DRAIN		
	CATCH BASIN		
	CLEAN OUT		
	FIRE SERVICE		
	OVERFLOW		
	ROOF DRAIN		

REFERENCE

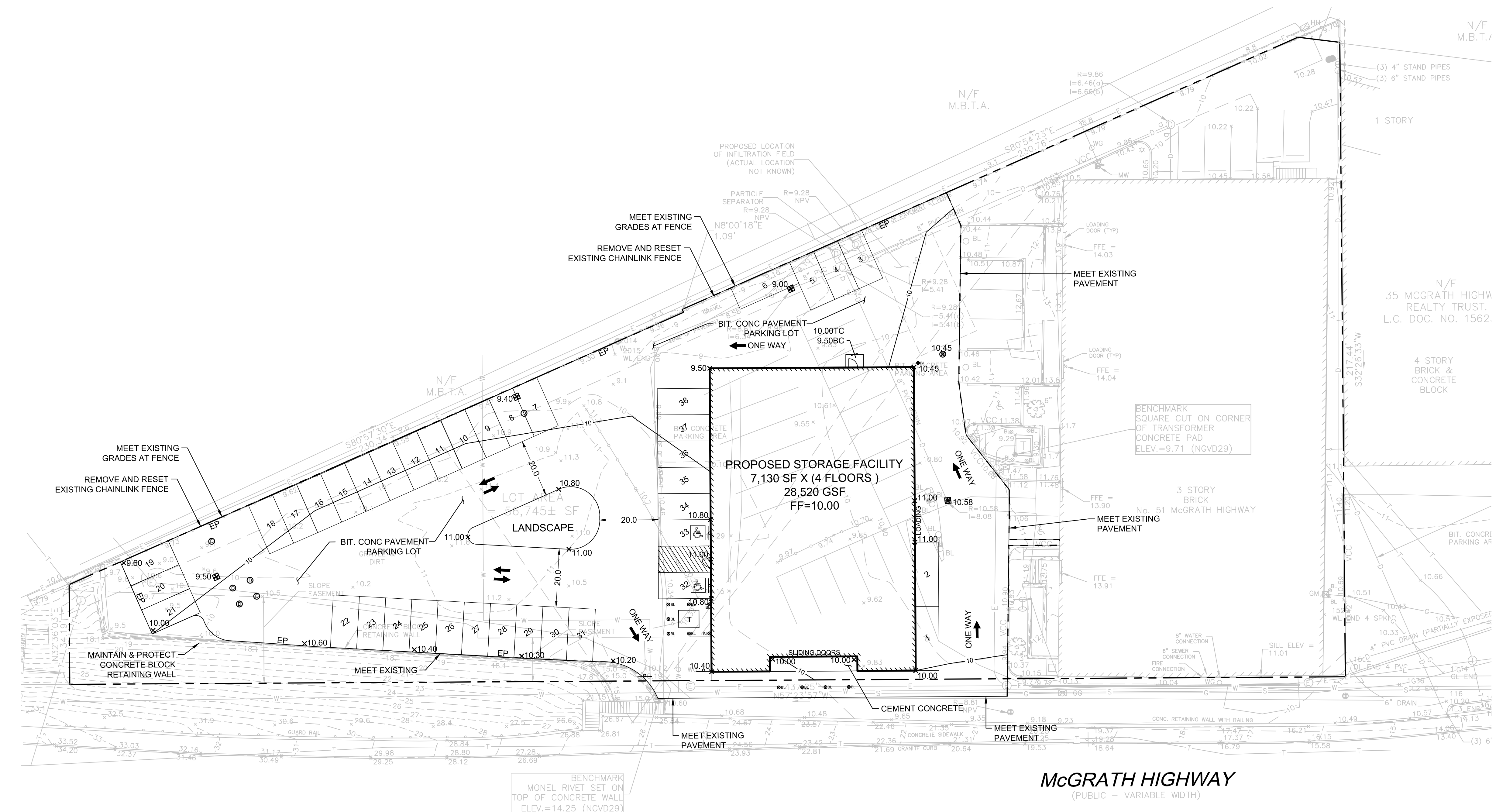
DEED REFERENCE: BK 44766 PG. 68
BK 44766 PG. 74
PLAN REFERENCE: PLAN 228 OF 1985
ASSESSORS: MAP 115 BLOCK B, LOTS 2, 3, & 4

PIPE MATERIALS:

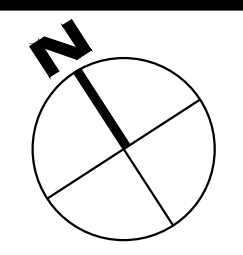
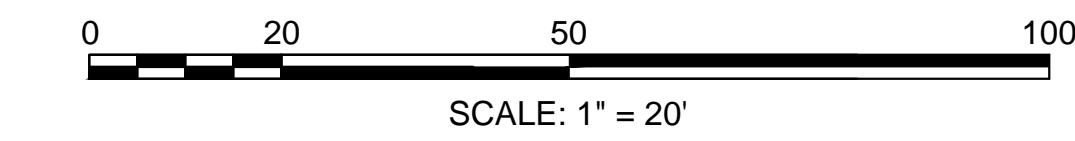
DRAIN: 8" PVC ASTM D3034-SDR 35, UNLESS OTHERWISE NOTED.
ROOF DRAIN: 6" PVC ASTM D3034-SDR 35, UNLESS OTHERWISE NOTED.

GENERAL NOTES

- THE LOCATION OF AND SIZE OF BURIED UTILITIES ARE THE RESULT OF SURFACE EVIDENCE AS LOCATED BY FIELD SURVEY BY DCI, PLANS OF RECORD & PLANS FROM RESPECTIVE UTILITY COMPANIES.
- THIS PLAN DOES NOT NECESSARILY DEPICT THE EXACT LOCATION AND SIZE OF ALL UTILITIES WHICH MAY EXIST AT THIS TIME INSIDE OR OUTSIDE OF EXISTING OR PROPOSED BUILDINGS, ON THE SUBJECT PROPERTY, WITHIN THE STREET ROW, OR ON ABUTTING LOTS.
- THE CITY OF SOMERVILLE'S MUNICIPAL UTILITIES (WATER, SEWER & DRAIN) ARE PART OF DIG-SAFE. MARKING OF THE CITY OF SOMERVILLE'S FACILITIES ARE DONE BY CITY OF SOMERVILLE'S PERSONNEL. CONTACT DIG-SAFE AT 1-888-344-7233 AT LEAST 72 HOURS PRIOR TO EXCAVATION.
- THE CONTRACTOR SHALL SUPPLY ALL FITTINGS AND VALVES NECESSARY FOR THE INSTALLATION OF THE DOMESTIC AND FIRE WATER SERVICES.
- NEW WATER SERVICES MUST BE LEFT SHUT OFF AT THE MAIN ON THE STREET UNTIL ACTIVATED BY THE CITY OF SOMERVILLE.
- THE CONTRACTOR IS RESPONSIBLE FOR VERIFYING THE EXACT LOCATIONS OF EXISTING UTILITIES, AND VERIFYING AND RECORDING THE EXACT LOCATION OF ALL PROPOSED UTILITY CONNECTIONS.
- ALL EXISTING UTILITY SERVICE CONNECTIONS SHALL BE ABANDONED UNLESS NOTED OTHERWISE. THE CONTRACTOR IS RESPONSIBLE FOR VERIFYING THE EXACT LOCATION OF EACH CONNECTION. THE WATER, DRAIN, AND SEWER SERVICES SHALL BE CAPPED AND CUT AT THE MAIN IN THE STREET BY THE CONTRACTOR. THE PROPOSED GAS INSTALLATION AND ABANDONMENT OF EXISTING CONNECTIONS SHALL BE COORDINATED BY THE CONTRACTOR WITH THE RESPECTIVE COMPANY.
- PERCOLATION TESTS SHALL BE PERFORMED PRIOR TO INSTALLATION OF STORMWATER MANAGEMENT SYSTEM. ADJUSTMENTS TO SYSTEM MAY BE REQUIRED PER TEST PIT RESULTS.
- THE RESPONSIBILITY OF OWNERSHIP AND MAINTENANCE OF THE SEWER, WATER, AND DRAIN CONNECTIONS ON PRIVATE PROPERTY AND/OR PRIVATE AND PUBLIC WAYS SHALL REMAIN THAT OF THE OWNER.
- THE CITY OF SOMERVILLE RESERVES THE RIGHT TO INSPECT ALL FACILITIES DISCHARGING TO THE MUNICIPAL DRAIN, SEWER, AND COMBINED SEWER SYSTEMS.
- ALL WORK PERFORMED AS PART OF THIS PROJECT SHALL CONFORM TO THE STANDARD SPECIFICATIONS & REGULATIONS OF THE CITY OF SOMERVILLE AND ANY OTHER AGENCY WITH AUTHORITY IN THIS AREA.
- DURING EXCAVATION AND CONSTRUCTION OF PIPES AND STRUCTURES, TRENCHES MUST BE ADEQUATELY BRACED AND PROTECTED AGAINST CAVE-IN.
- ALL RIMS AND COVERS OF EXISTING UTILITIES STRUCTURES TO REMAIN WITHIN THE LIMIT OF WORK SHALL BE ADJUSTED OR REMODELED TO MEET PROPOSED GRADES, UNLESS OTHERWISE NOTED.
- ALL UTILITIES SHOWN ON THIS SITE ARE TO THE EXTERIOR OF THE BUILDING FOUNDATION ONLY. UTILITIES THROUGH THE FOUNDATION AND INSIDE THE BUILDING ARE APPROXIMATE AND THE RESPONSIBILITY OF THE MECHANICAL ENGINEER. SEE MECHANICAL ENGINEER PLANS.
- THIS PLAN HAS BEEN PREPARED FOR THE APPROVAL OF THE DOMESTIC/FIRE WATER SERVICE, SEWER SERVICE, AND THE STORM DRAINAGE SYSTEM.



McGRATH HIGHWAY
(PUBLIC - VARIABLE WIDTH)



NORTH
Design Consultants, Inc.
CIVIL ENGINEERS and LAND SURVEYORS
120 Middlesex Avenue, Suite 20
Somerville, MA 02145
617-776-3350p 617-776-7710f

DEVELOPER:
LIFE STORAGE
6467 MAIN STREET
WILLIAMSVILLE, NY 14221
716-650-6012

ARCHITECT:
STINARD ARCHITECTURE, INC.
217 SOUTH ERWIN STREET
6467 MAIN STREET
CARTERSVILLE, GA 30120
770 425 7400

PROJECT TEAM

LIFE STORAGE
4-STORY STORAGE FACILITY
51 McGRATH HIGHWAY
SOMERVILLE, MA 02143

PROJECT INFO

REV	DESCRIPTION	DATE

STAMP:

LAYOUT & GRADING PLAN

SHEET NAME:

C1.0

SHT NO:

DR BY: RLB
CHK BY: SBS
PROJ NO: 2014-108
DATE: OCTOBER 4, 2017
SCALE: 1"=20'

	LEGEND	
		REFERENCE
		DEED REFERENCE: BK 44766 PG. 68 BK 44766 PG. 74
		PLAN REFERENCE: PLAN 228 OF 1985
		ASSESSORS: MAP 115 BLOCK B, LOTS 2, 3, & 4
		PIPE MATERIALS:
		DRAIN: 8" PVC ASTM D3034-SDR 35, UNLESS OTHERWISE NOTED.
		ROOF DRAIN: 6" PVC ASTM D3034-SDR 35, UNLESS OTHERWISE NOTED.

GENERAL NOTES

- THE LOCATION OF AND SIZE OF BURIED UTILITIES ARE THE RESULT OF SURFACE EVIDENCE AS LOCATED BY FIELD SURVEY BY DCI, PLANS OF RECORD & PLANS FROM RESPECTIVE UTILITY COMPANIES.
- THIS PLAN DOES NOT NECESSARILY DEPICT THE EXACT LOCATION AND SIZE OF ALL UTILITIES WHICH MAY EXIST AT THIS TIME INSIDE OR OUTSIDE OF EXISTING OR PROPOSED BUILDINGS, ON THE SUBJECT PROPERTY, WITHIN THE STREET ROW, OR ON ABUTTING LOTS.
- THE CITY OF SOMERVILLE'S MUNICIPAL UTILITIES (WATER, SEWER & DRAIN) ARE PART OF DIG-SAFE. MARKING OF THE CITY OF SOMERVILLE'S FACILITIES ARE DONE BY CITY OF SOMERVILLE'S PERSONNEL. CONTACT DIG-SAFE AT 1-888-344-7233 AT LEAST 72 HOURS PRIOR TO EXCAVATION.
- THE CONTRACTOR SHALL SUPPLY ALL FITTINGS AND VALVES NECESSARY FOR THE INSTALLATION OF THE DOMESTIC AND FIRE WATER SERVICES.
- NEW WATER SERVICES MUST BE LEFT SHUT OFF AT THE MAIN ON THE STREET UNTIL ACTIVATED BY THE CITY OF SOMERVILLE.
- THE CONTRACTOR IS RESPONSIBLE FOR VERIFYING THE EXACT LOCATIONS OF EXISTING UTILITIES, AND VERIFYING AND RECORDING THE EXACT LOCATION OF ALL PROPOSED UTILITY CONNECTIONS.
- ALL EXISTING UTILITY SERVICE CONNECTIONS SHALL BE ABANDONED UNLESS NOTED OTHERWISE. THE CONTRACTOR IS RESPONSIBLE FOR VERIFYING THE EXACT LOCATION OF EACH CONNECTION. THE WATER, DRAIN, AND SEWER SERVICES SHALL BE CAPPED AND CUT AT THE MAIN IN THE STREET BY THE CONTRACTOR. THE PROPOSED GAS INSTALLATION AND ABANDONMENT OF EXISTING CONNECTIONS SHALL BE COORDINATED BY THE CONTRACTOR WITH THE RESPECTIVE COMPANY.
- COLATION TESTS SHALL BE PERFORMED PRIOR TO INSTALLATION OF STORMWATER MANAGEMENT SYSTEM. ADJUSTMENTS TO SYSTEM MAY BE REQUIRED PER TEST PIT RESULTS.
- THE RESPONSIBILITY OF OWNERSHIP AND MAINTENANCE OF THE SEWER, WATER, AND DRAIN CONNECTIONS ON PRIVATE PROPERTY AND/OR PRIVATE AND PUBLIC WAYS SHALL REMAIN THAT OF THE OWNER.
- THE CITY OF SOMERVILLE RESERVES THE RIGHT TO INSPECT ALL FACILITIES DISCHARGING TO THE MUNICIPAL DRAIN, SEWER, AND COMBINED SEWER SYSTEMS.
- ALL WORK PERFORMED AS PART OF THIS PROJECT SHALL CONFORM TO THE STANDARD SPECIFICATIONS & REGULATIONS OF THE CITY OF SOMERVILLE AND ANY OTHER AGENCY WITH AUTHORITY IN THIS AREA.
- DURING EXCAVATION AND CONSTRUCTION OF PIPES AND STRUCTURES, TRENCHES MUST BE ADEQUATELY BRACED AND PROTECTED AGAINST CAVE-IN.
- ALL RIMS AND COVERS OF EXISTING UTILITIES STRUCTURES TO REMAIN WITHIN THE LIMIT OF WORK SHALL BE ADJUSTED OR REMODELED TO MEET PROPOSED GRADES, UNLESS OTHERWISE NOTED.
- ALL UTILITIES SHOWN ON THIS SITE ARE TO THE EXTERIOR OF THE BUILDING FOUNDATION ONLY. UTILITIES THROUGH THE FOUNDATION AND INSIDE THE BUILDING ARE APPROXIMATE AND THE RESPONSIBILITY OF THE MECHANICAL ENGINEER. SEE MECHANICAL ENGINEER PLANS.
- THIS PLAN HAS BEEN PREPARED FOR THE APPROVAL OF THE DOMESTIC/FIRE WATER SERVICE, SEWER SERVICE, AND THE STORM DRAINAGE SYSTEM.

Design Consultants, Inc.
 CIVIL ENGINEERS and LAND SURVEYORS
 120 Middlesex Avenue, Suite 20
 Somerville, MA 02145
 617-776-3350p 617-776-7110f

DEVELOPER:
 LIFE STORAGE
 6467 MAIN STREET
 WILLIAMSVILLE, NY 14221
 716-650-6012

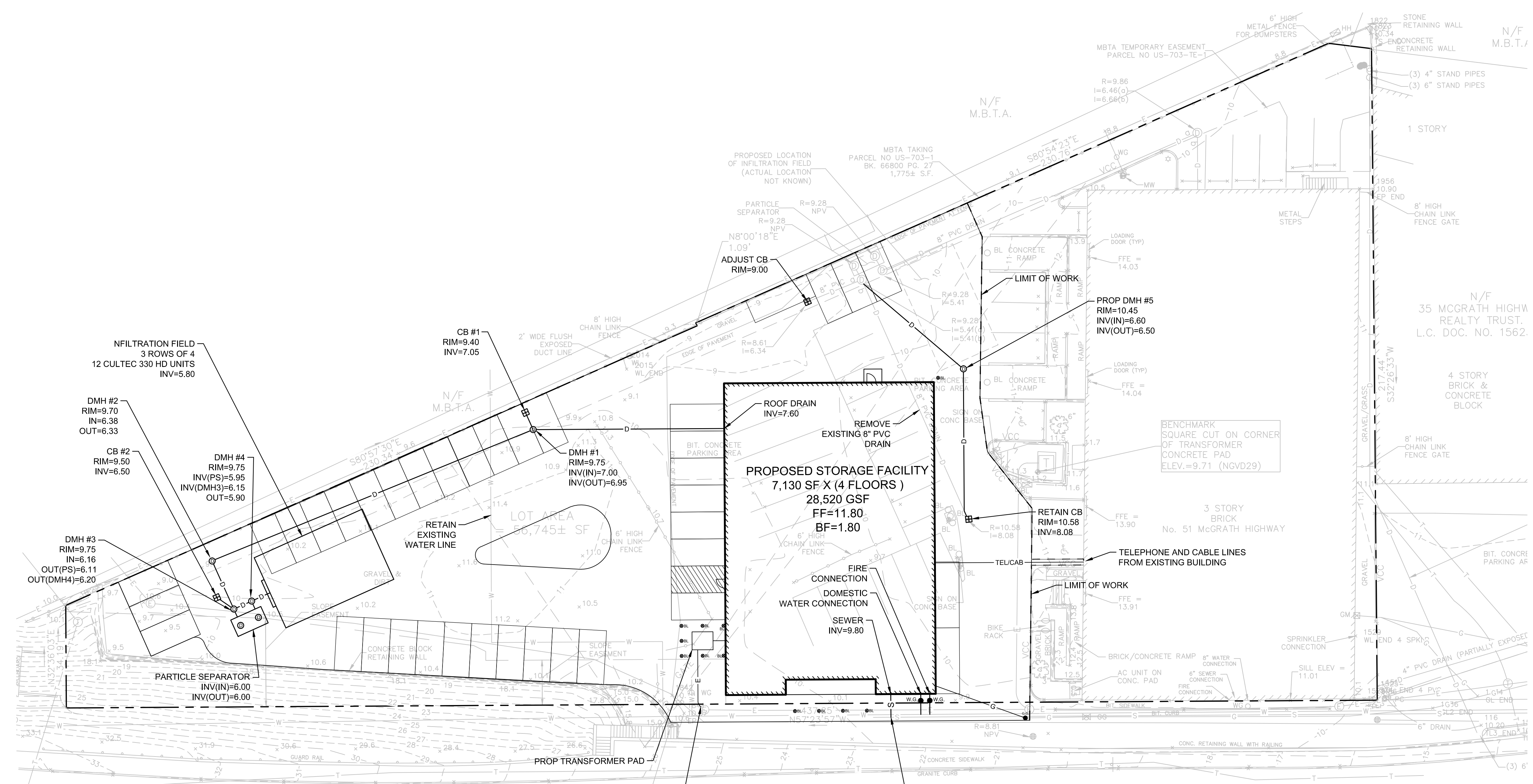
ARCHITECT:
 STINARD ARCHITECTURE, INC.
 217 SOUTH ERWIN STREET
 6467 MAIN STREET
 CARTERSVILLE, GA 30120
 770-425-7400

PROJECT TEAM

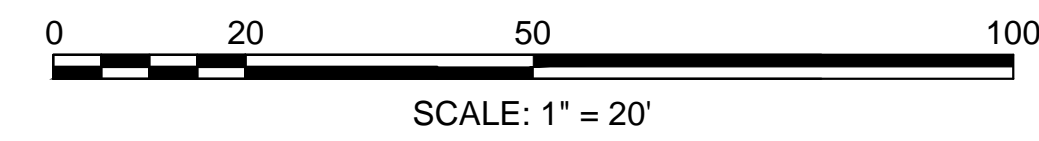
LIFE STORAGE
 4-STORY STORAGE FACILITY
 51 MCGRATH HIGHWAY
 SOMERVILLE, MA 02143

PROJECT INFO

REV	DESCRIPTION	DATE



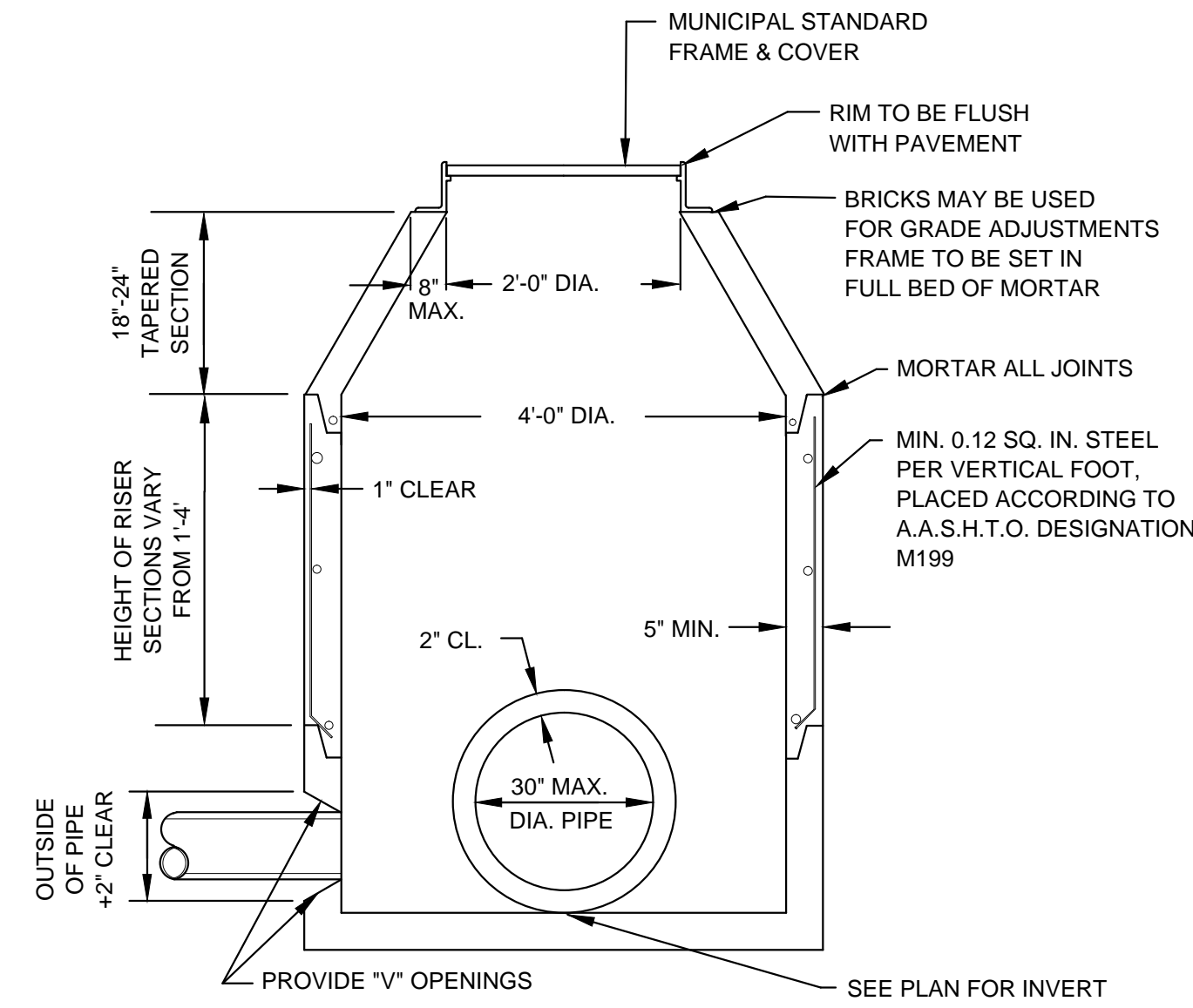
McGRATH HIGHWAY
 (PUBLIC - VARIABLE WIDTH)



DRAINAGE & UTILITY PLAN

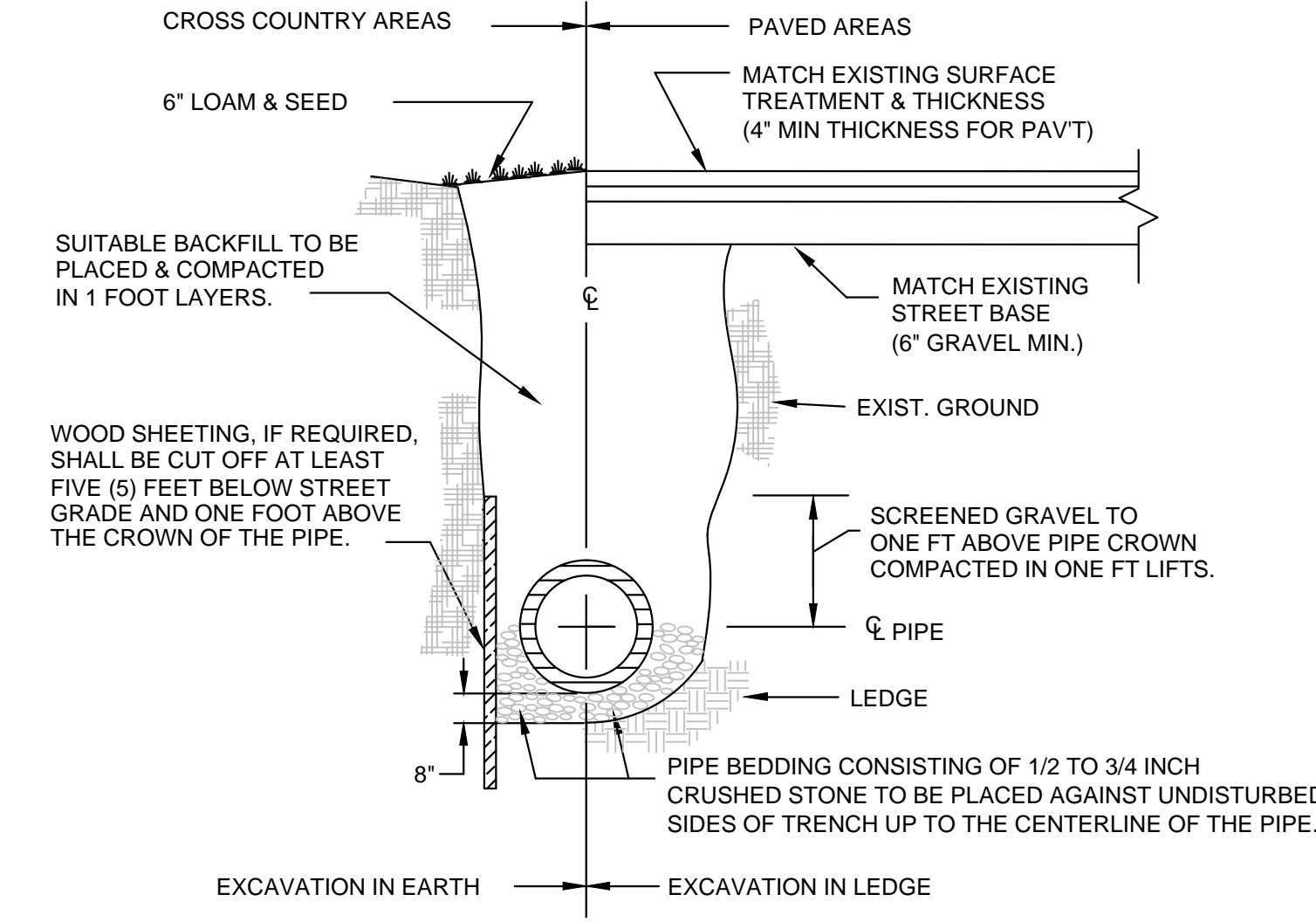
SHEET NAME:
 C2.0

SHT NO:
 DR BY: RLB
 CHK BY: SBS
 PROJ NO: 2014-108
 DATE: OCTOBER 4, 2017
 SCALE: 1"=20'



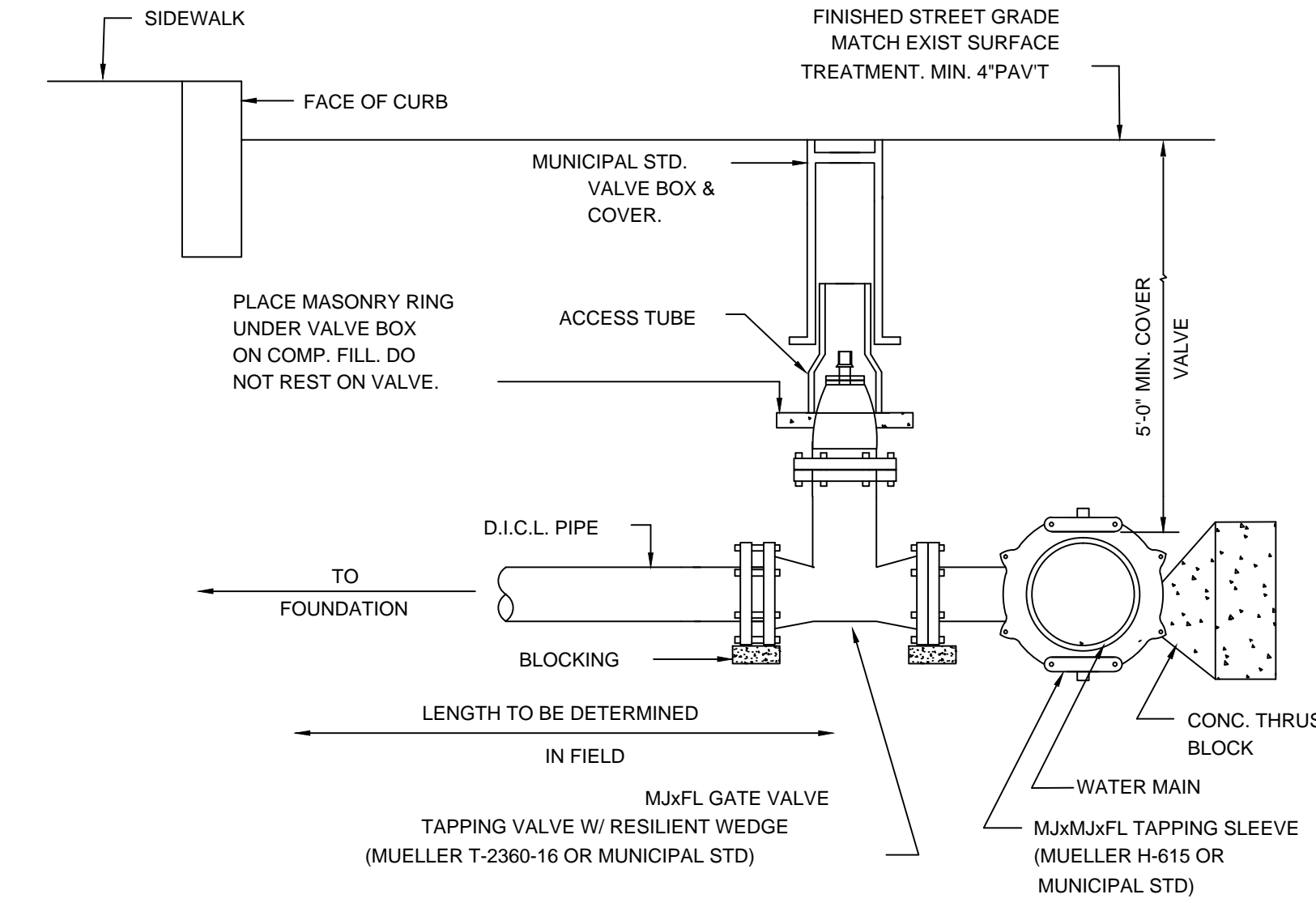
PRECAST CONCRETE DRAIN MANHOLE

NOT TO SCALE



TRENCH EXCAVATION

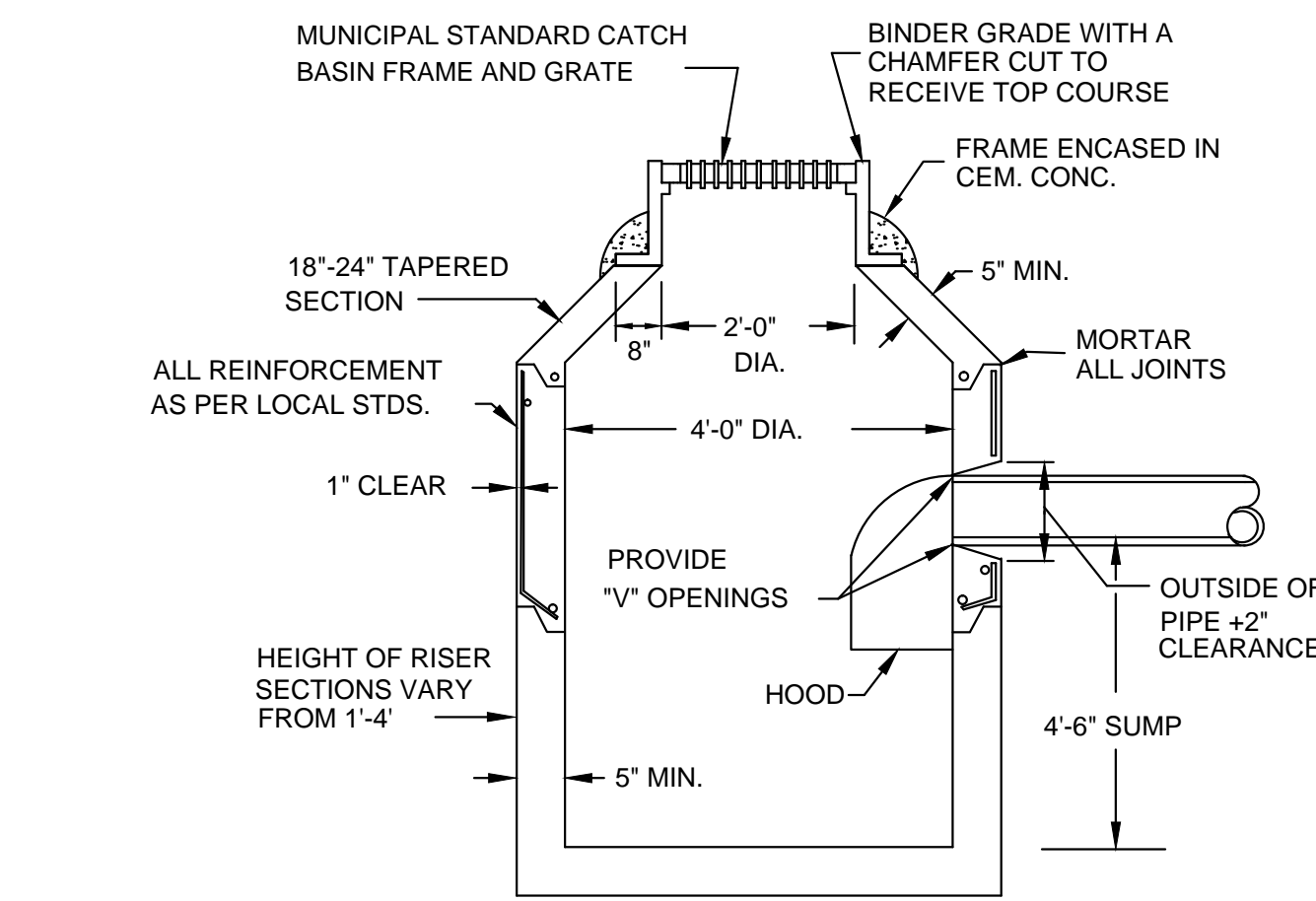
NOT TO SCALE



WATER CONNECTION WITH WET TAP

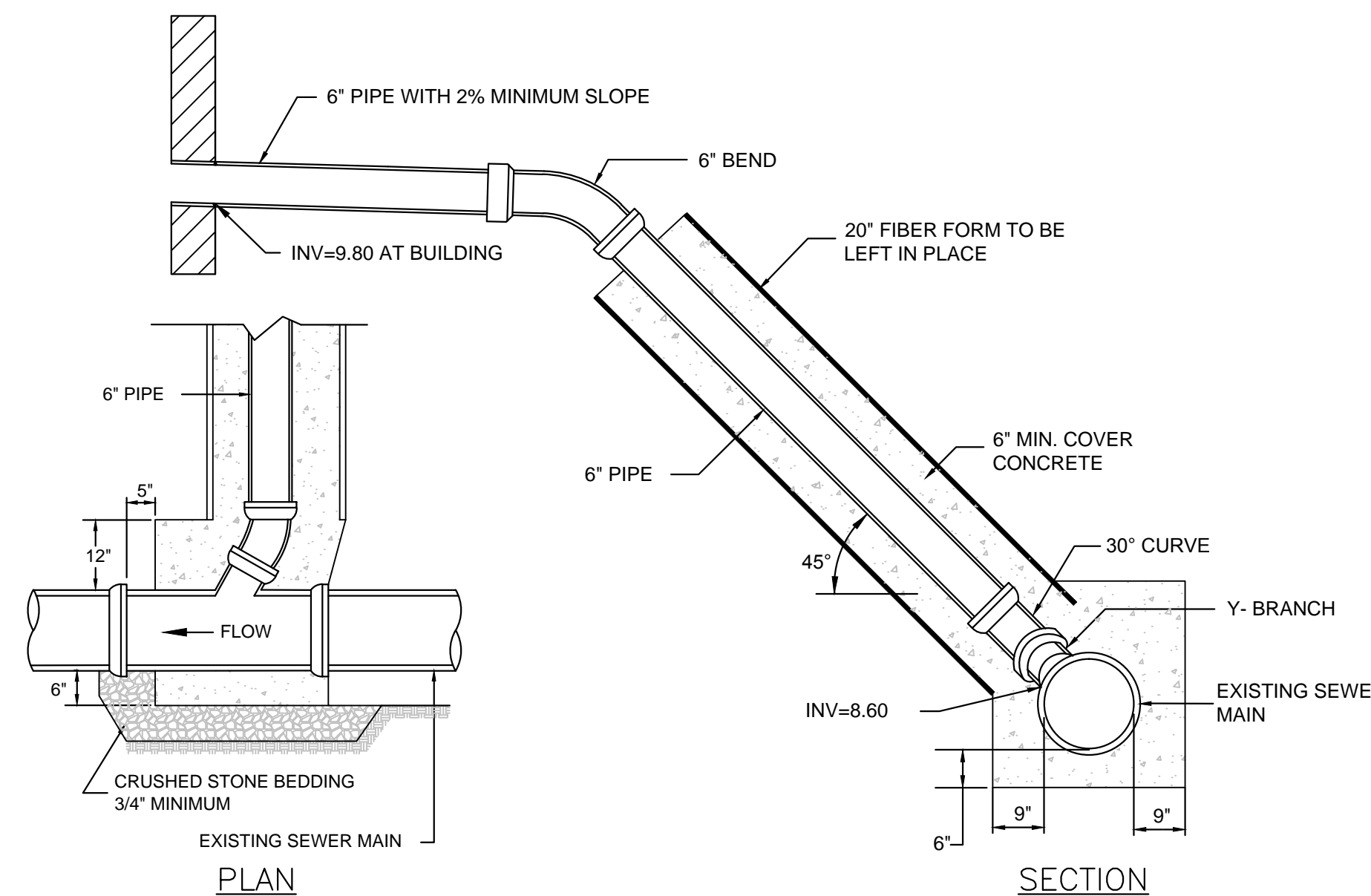
NOT TO SCALE

- NOTE: 1. ALL WATER DISTRIBUTION VALVES, FITTINGS, AND PIPING SHALL COMPLY WITH ALL MUNICIPAL STANDARDS.
2. DETAIL UTILIZED FOR 4, 6, OR 8 INCH SERVICE PIPE.



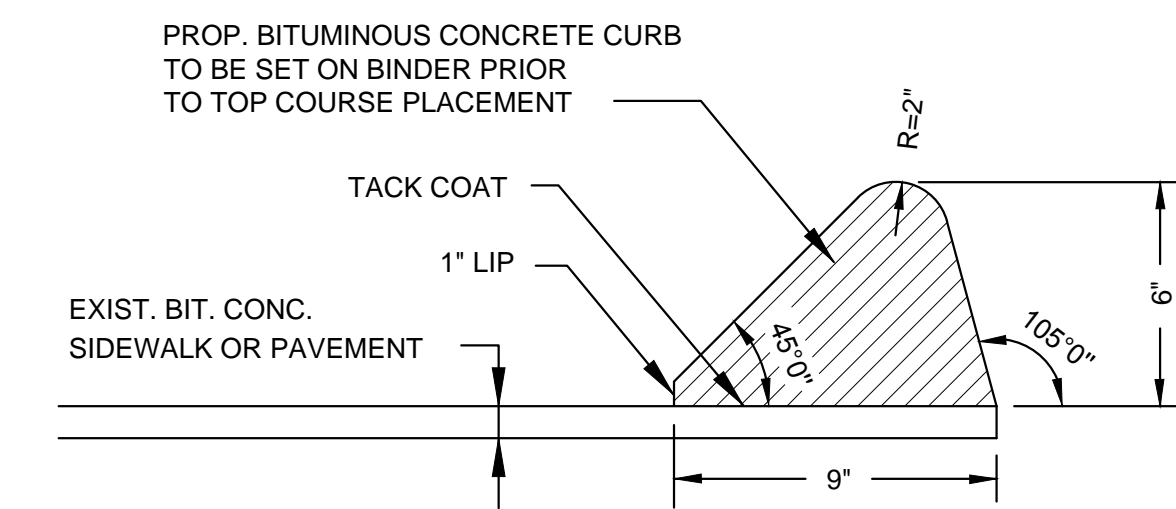
PRECAST CONCRETE CATCH BASIN

NOT TO SCALE



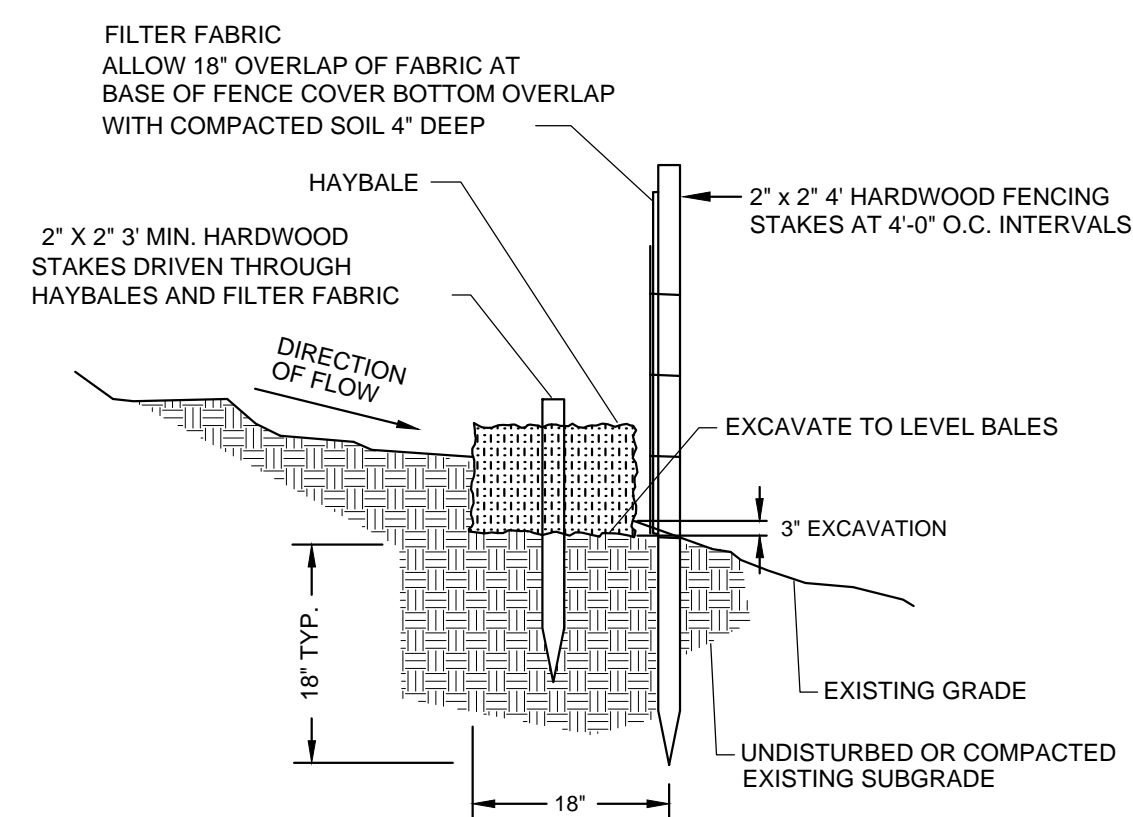
SEWER CHIMNEY WITH 45° CONNECT TO EXISTING SEWER

NOT TO SCALE



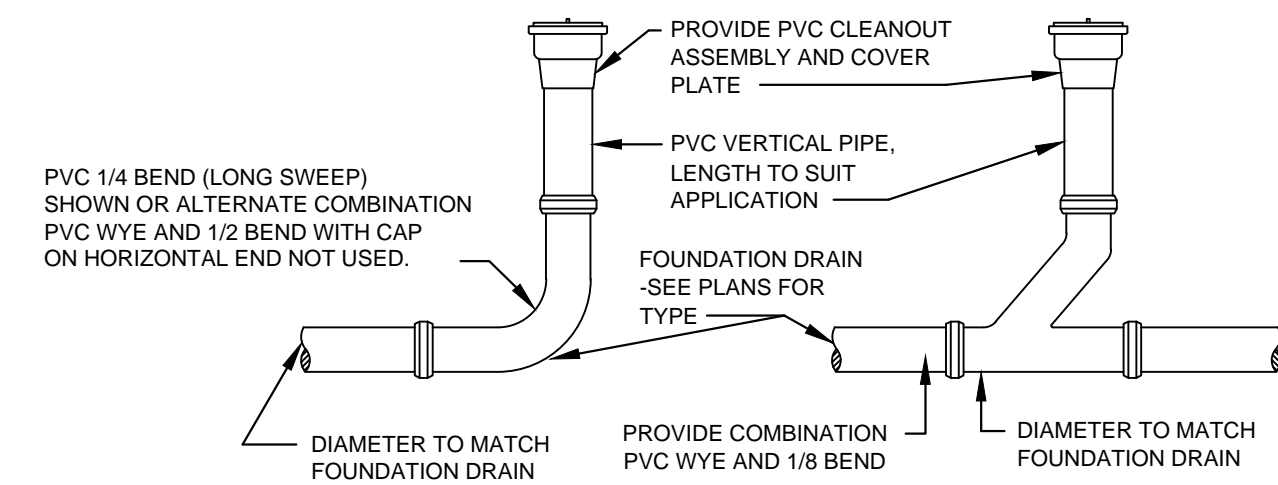
BITUMINOUS CONCRETE CURB TYPE 2

NOT TO SCALE



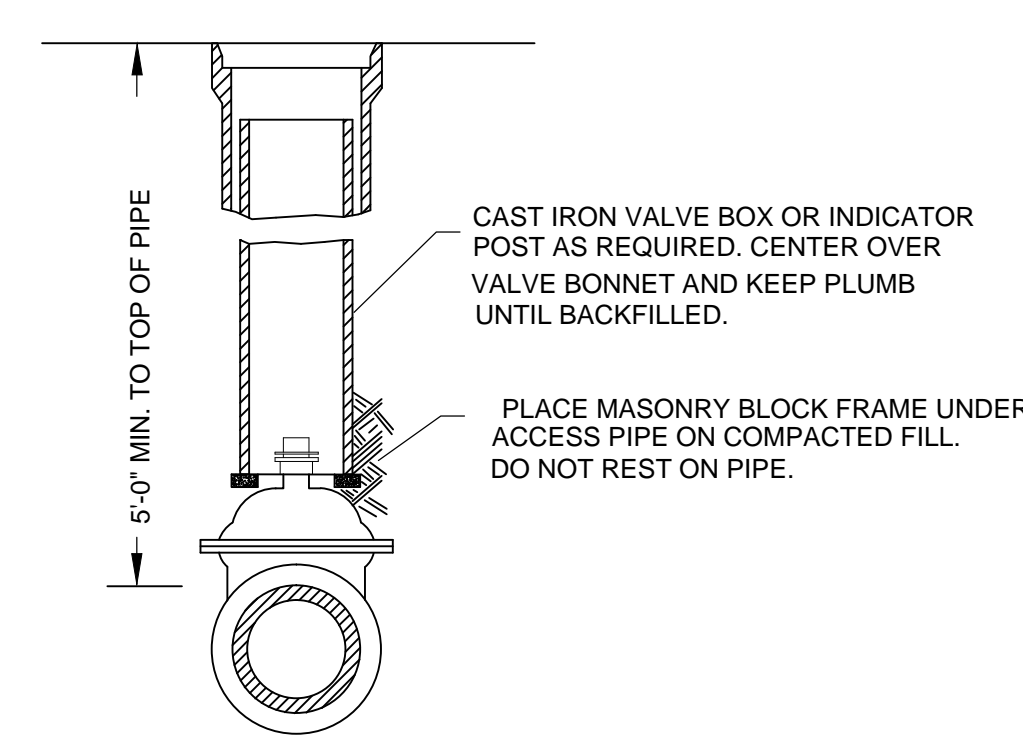
HAYBALE DIKE WITH SILT FENCE

NOT TO SCALE



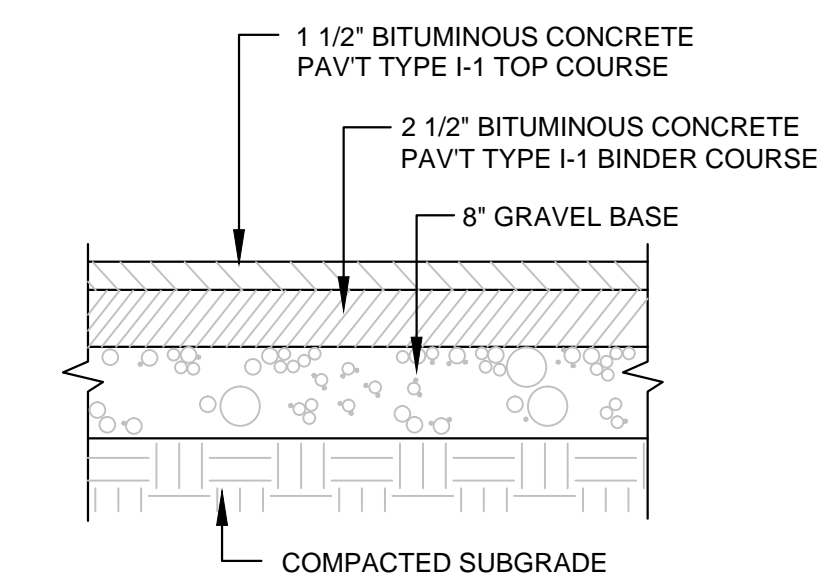
CLEANOUT

NOT TO SCALE



GATE VALVE INSTALLATION IN TRENCH

NOT TO SCALE



BITUMINOUS CONCRETE PAVEMENT

NOT TO SCALE

Design Consultants, Inc.
CIVIL ENGINEERS and LAND SURVEYORS
123 Middlesex Avenue, Suite 20
Somerville, MA 02145
617-776-3350p 617-776-7710f

DEVELOPER:
LIFE STORAGE
6467 MAIN STREET
WILLIAMSVILLE, NY 14221
716-650-6012

ARCHITECT:
STINARD ARCHITECTURE, INC.
217 SOUTH ERWIN STREET
6467 MAIN STREET
CARTERSVILLE, GA 30120
770 425 7400

PROJECT TEAM

LIFE STORAGE
4-STORY STORAGE FACILITY
51 MCGRATH HIGHWAY
SOMERVILLE, MA 02143

PROJECT INFO

REV	DESCRIPTION	DATE

REV DESCRIPTION DATE

STAMP:

CONSTRUCTION
DETAILS
1 OF 2

SHEET NAME:

C3.0

SHT NO:

DR BY: RLB

CHK BY: SBS

PROJ NO: 2014-108

DATE: OCTOBER 4, 2017

SCALE: N.T.S.

DEVELOPER:
 LIFE STORAGE
 6467 MAIN STREET
 WILLIAMSVILLE, NY 14221
 716-650-6012

ARCHITECT:
 STINARD ARCHITECTURE, INC.
 217 SOUTH ERWIN STREET
 6467 MAIN STREET
 CARTERSVILLE, GA 30120
 770-425-7400

PROJECT TEAM

LIFE STORAGE
 4-STORY STORAGE FACILITY
 51 MCGRATH HIGHWAY
 SOMERVILLE, MA 02143

PROJECT INFO

REV	DESCRIPTION	DATE

REV DESCRIPTION DATE

STAMP:

CONSTRUCTION
 DETAILS
 2 OF 2

SHEET NAME:

C3.1

SHT NO:

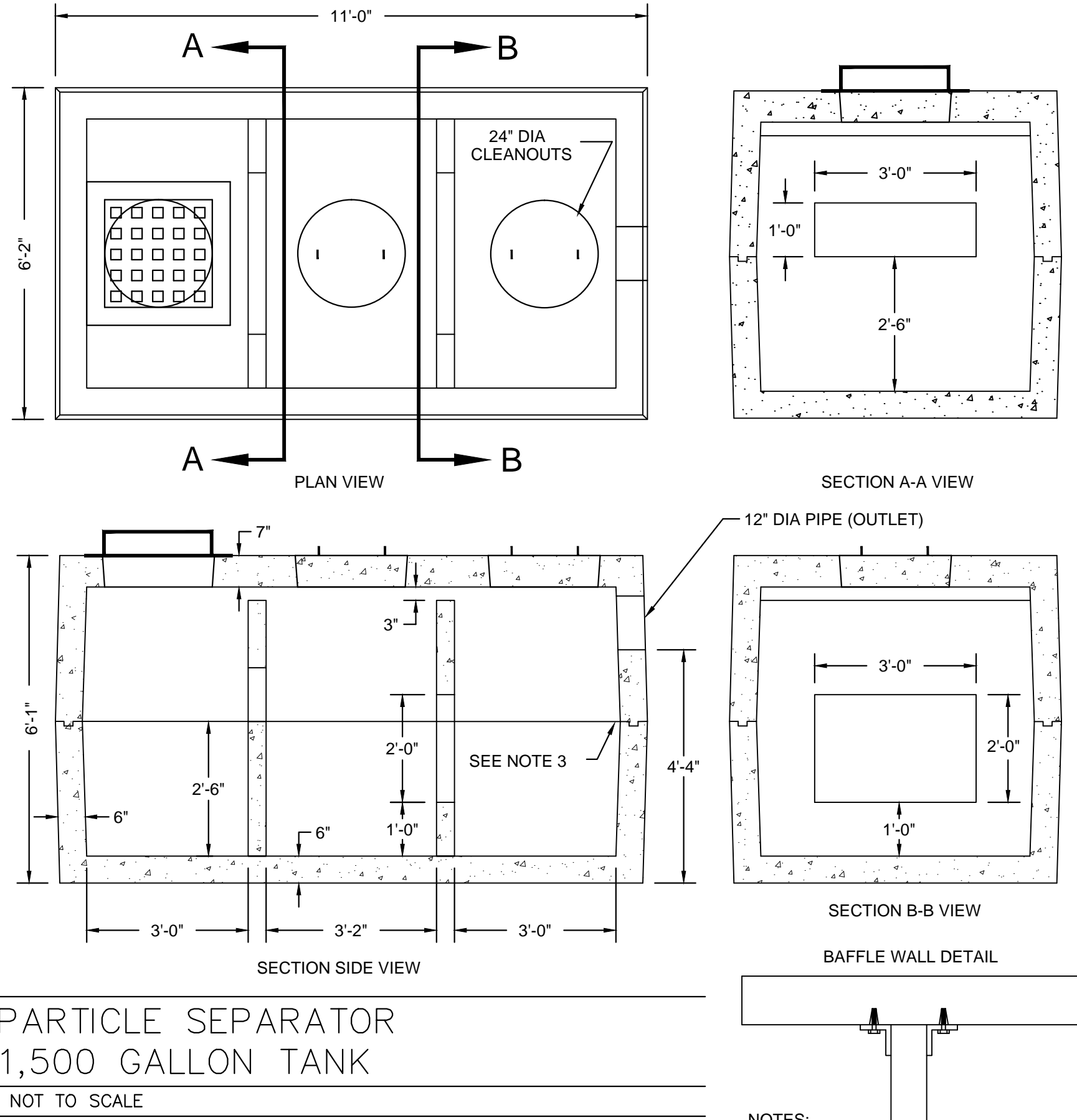
DR BY: RLB

CHK BY: SBS

PROJ NO: 2014-108

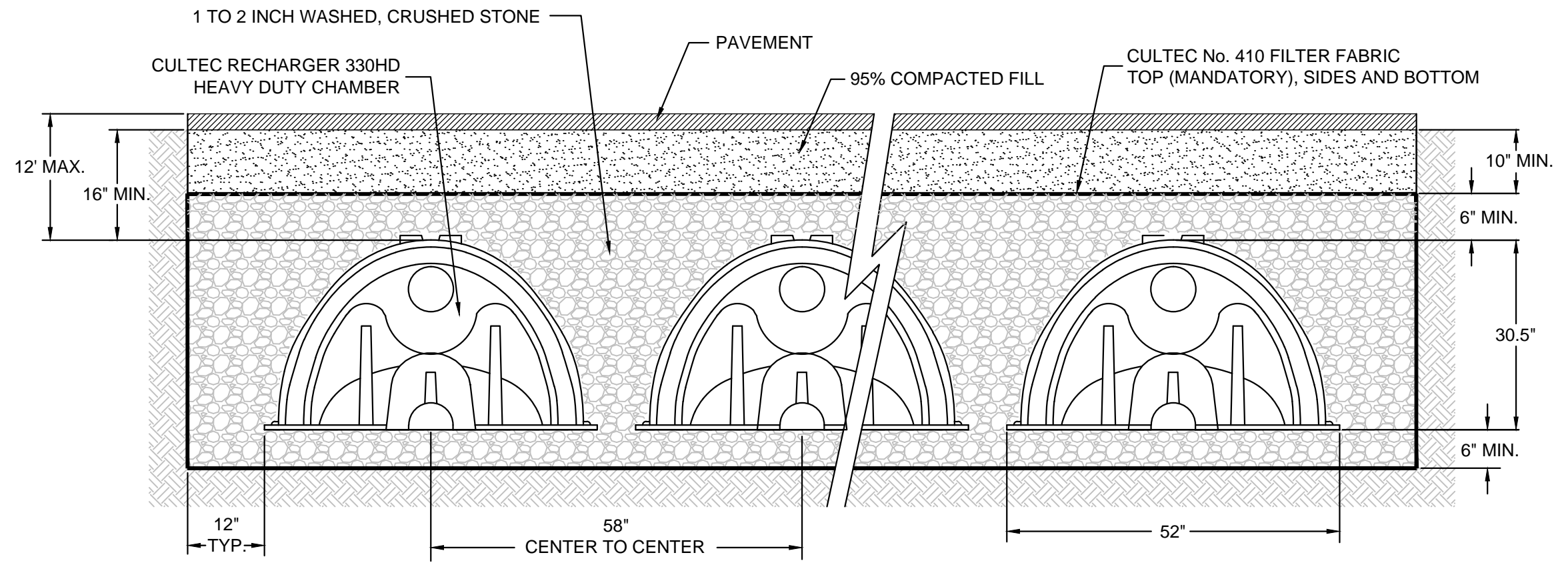
DATE: OCTOBER 4, 2017

SCALE: N.T.S.

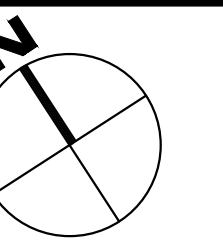


PARTICLE SEPARATOR
1,500 GALLON TANK
 NOT TO SCALE

- NOTES:
1. CONCRETE: 5,000 PSI MINIMUM AFTER 28 DAYS.
 2. DESIGNED FOR H-20 LOADING.
 3. TONGUE & GROOVE JOINT SEALED WITH BUTYL RESIN.



CROSS SECTION RECHARGER 330HD PAVED H-20
CULTEC CHAMBER SYSTEM
 NOT TO SCALE



NORTH

DEVELOPER:
 LIFE STORAGE
 6467 MAIN STREET
 WILLIAMSVILLE, NY 14221
 716-650-6012
 ARCHITECT:
 STINARD ARCHITECTURE, INC.
 217 SOUTH ERWIN STREET
 6467 MAIN STREET
 CARTERSVILLE, GA 30120
 770-425-7400
 PROJECT TEAM

LIFE STORAGE
 3-STORY STORAGE FACILITY
 51 McGRATH HIGHWAY
 SOMERVILLE, MA 02143

PROJECT INFO

REV	DESCRIPTION	DATE

STAMP:

**DRAFT
 LAYOUT
 PLAN C**

SHEET NAME:

DRAFT

SHT NO:

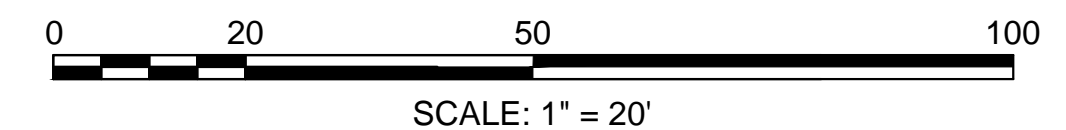
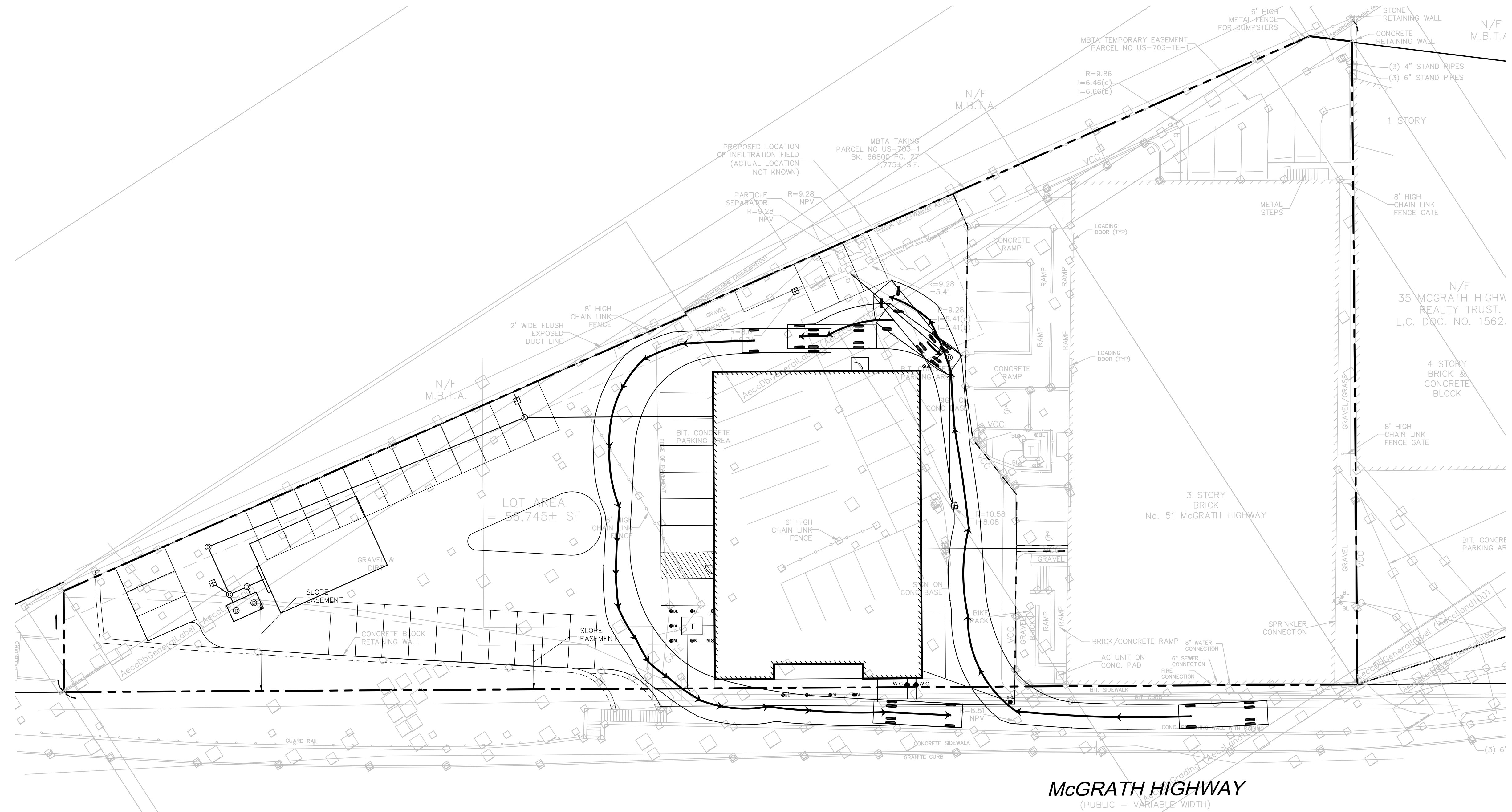
DR BY: RLB

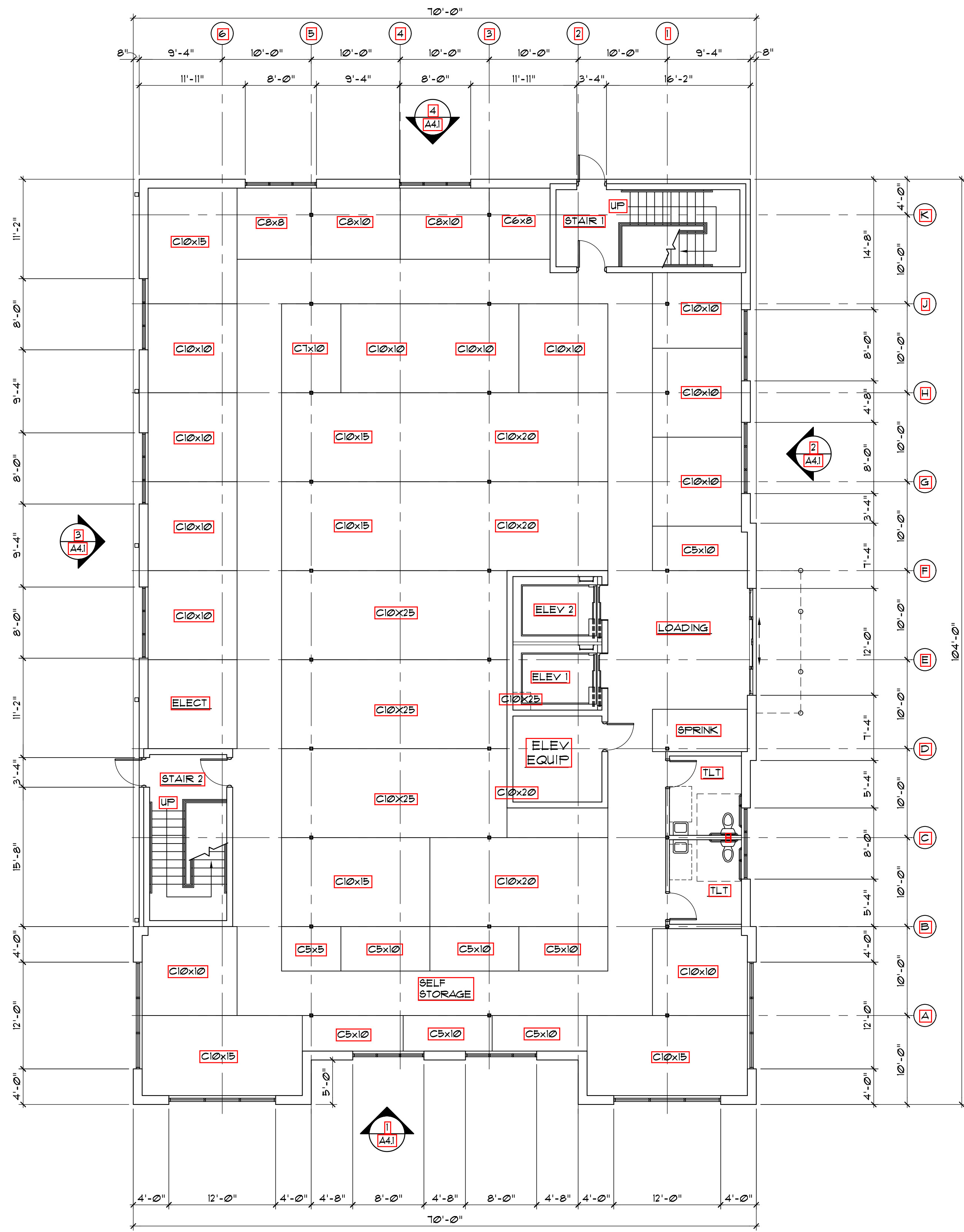
CHK BY: SBS

PROJ NO: 2014-108

DATE: AUGUST 9, 2017

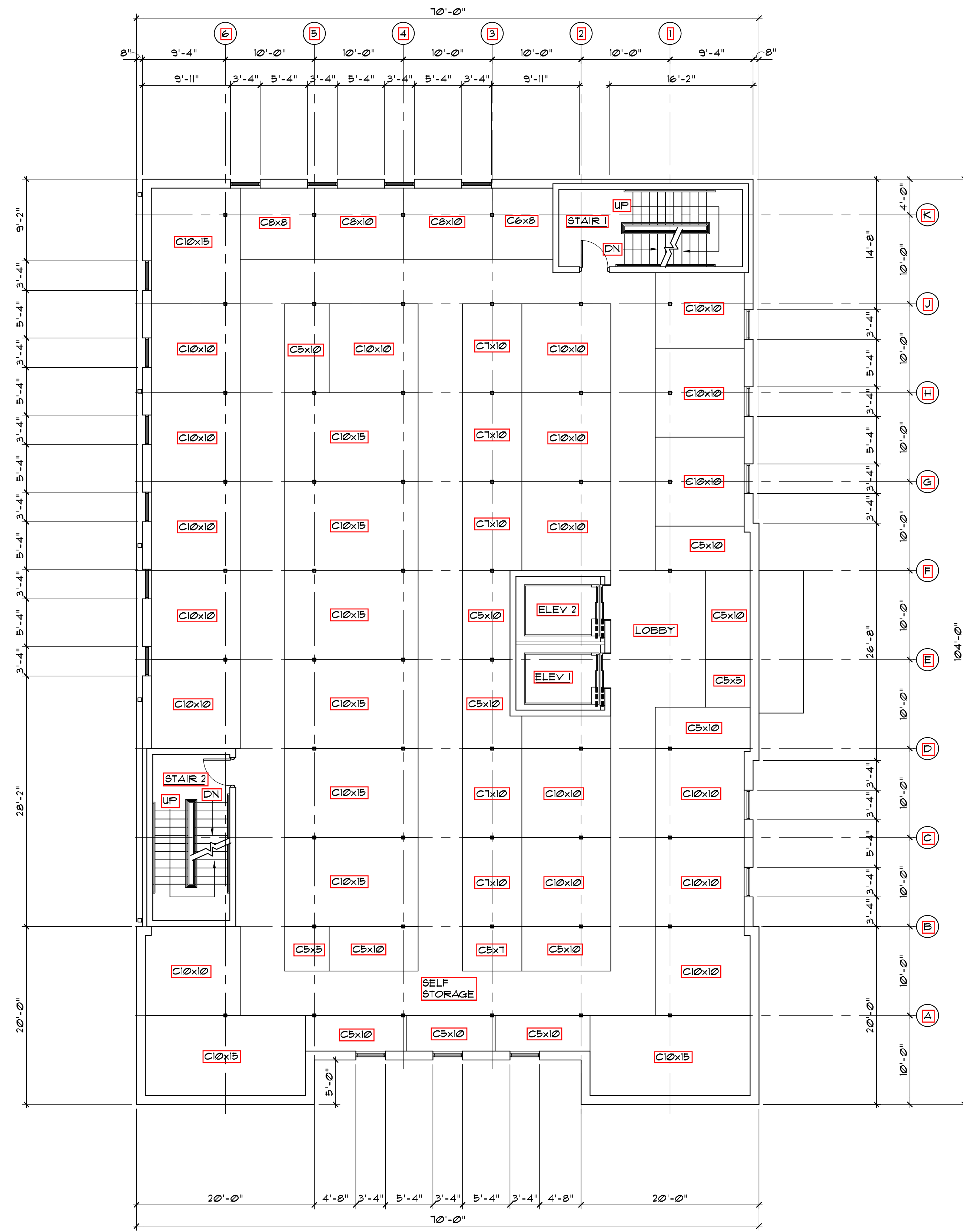
SCALE: 1"=20'

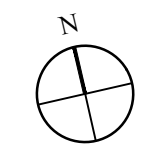







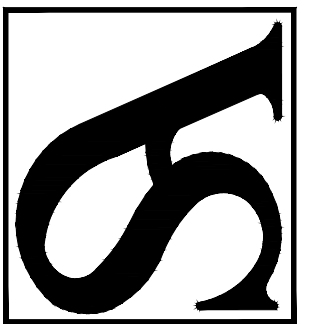
FIRST FLOOR PLAN
 SCALE: 1/8"=1'-0"





SECOND FLOOR PLAN
 SCALE: 1/8"=1'-0"

THESE DRAWINGS AND DESIGNS ARE THE PROPERTY OF STINARD ARCHITECTURE INC. AND SHALL NOT BE REPRODUCED WITHOUT THE ARCHITECT'S PERMISSION. THEY WERE PREPARED FOR USE ON THIS SPECIFIC PROJECT AND ARE NOT SUITABLE FOR USE ON A DIFFERENT SITE OR AT A LATER DATE. ALL DIMENSIONS MUST BE CHECKED ON THE FIELD AND THE ARCHITECT NOTIFIED OF ANY DISCREPANCIES BEFORE PROCEEDING WITH CONSTRUCTION. DO NOT SCALE DRAWINGS.

Uncle Bob's Self Storage Facility #433
 51 McGrath Highway
 Somerville, MA

STINARD ARCHITECTURE INC.

 CARTERSVILLE, GA 30020
 302 EAST MAIN STREET
 770-425-7400 (F) 770-425-7400
 STINARD.ARCH.COM

ISSUE: NOT FOR CONSTRUCTION REVISIONS:

PROJECT NUMBER: 201613
 DATE: 8-29-17

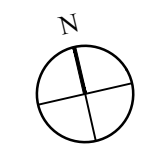
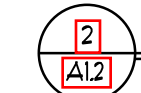
SHEET NUMBER:
A1.1





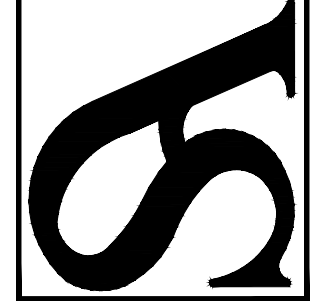
THIRD FLOOR PLAN
 SCALE: 1/8"=1'-0"





FOURTH FLOOR PLAN
 SCALE: 1/8"=1'-0"

THESE DRAWINGS AND DESIGNS ARE THE PROPERTY OF STINARD ARCHITECTURE INC. AND SHALL NOT BE REPRODUCED WITHOUT THE ARCHITECT'S PERMISSION. THEY WERE PREPARED FOR USE ON THIS SPECIFIC PROJECT AND ARE NOT SUITABLE FOR USE ON A DIFFERENT SITE OR AT A LATER DATE. ALL DIMENSIONS MUST BE CHECKED ON THE FIELD AND THE ARCHITECT NOTIFIED OF ANY DISCREPANCIES BEFORE PROCEEDING WITH CONSTRUCTION. DO NOT SCALE DRAWINGS.

Uncle Bob's Self Storage Facility #433
 51 McGrath Highway
 Somerville, MA

STINARD ARCHITECTURE INC.

 CARTERSVILLE, GA 30020
 302 EAST MAIN STREET
 770-425-7400 (F) 770-425-7400
 STINARDARCH.COM

ISSUE: NOT FOR CONSTRUCTION REVISIONS:

PROJECT NUMBER: 201613
 DATE: 8-29-17

SHEET NUMBER:
A1.2



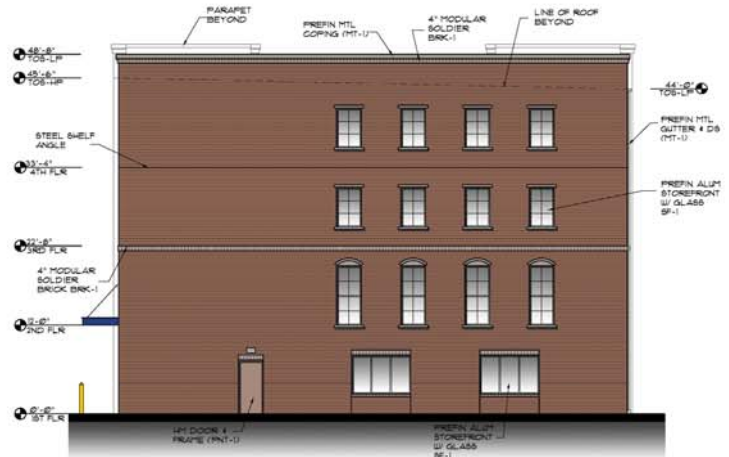
1 SOUTH ELEVATION
SCALE: 1/8"=1'-0"



2 EAST ELEVATION
SCALE: 1/8"=1'-0"



3 WEST ELEVATION
SCALE: 1/8"=1'-0"



4 NORTH ELEVATION
SCALE: 1/8"=1'-0"

THESE DRAWINGS AND SPECIFICATIONS ARE THE PROPERTY OF STANARD ARCHITECTURE, INC. AND SHALL NOT BE REPRODUCED OR TRANSMITTED IN ANY FORM OR BY ANY MEANS, ELECTRONIC OR MECHANICAL, INCLUDING PHOTOCOPYING, RECORDING, OR BY ANY INFORMATION STORAGE AND RETRIEVAL SYSTEM, WITHOUT THE WRITTEN PERMISSION OF STANARD ARCHITECTURE, INC. ANY REPRODUCTION OR TRANSMISSION OF THESE DRAWINGS WITHOUT THE WRITTEN PERMISSION OF STANARD ARCHITECTURE, INC. IS STRICTLY PROHIBITED. THE CONTRACTOR SHALL BE RESPONSIBLE FOR OBTAINING ALL NECESSARY PERMITS AND APPROVALS FROM THE LOCAL, STATE, AND FEDERAL GOVERNMENTS. THE CONTRACTOR SHALL BE RESPONSIBLE FOR OBTAINING ALL NECESSARY PERMITS AND APPROVALS FROM THE LOCAL, STATE, AND FEDERAL GOVERNMENTS. THE CONTRACTOR SHALL BE RESPONSIBLE FOR OBTAINING ALL NECESSARY PERMITS AND APPROVALS FROM THE LOCAL, STATE, AND FEDERAL GOVERNMENTS.

Uncle Bob's Self Storage Facility #433
51 McGrath Highway
Somerville, MA



ISSUE NOT FOR CONSTRUCTION REVIEWS

PROJECT NUMBER: 201613
DATE: 8-29-17

SHEET NUMBER: A4.1